

# 2023 APRICOT APNIC 55

MANILA, PHILIPPINES

20 February – 2 March 2023

[#apricot2023](https://twitter.com/apricot2023)



# What is “Peering Personals”?

- Chance for everyone to introduce their networks :)

The community gets a chance to build a better connected Internet ...

**“One Peering session at a time!”**

# Peering Personals Template guide :)

## 1. ISP/OTT/CDN/Research; WHO to Peer

Basic information of Network Operators to establish peering ( ASN, Policy, location, etc)

## 2. Internet eXchange Point(IXP); WHERE to Peer

IXP information (name, location, peers, etc) as reference to peering

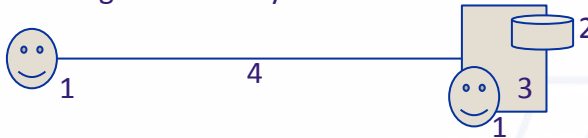
## 3. Data Center(DC); WHERE (location) to peer

DC information(name, location, etc) that hosts Peers, IXPs and transport providers

## 4. Transport; HOW to get there

Network information to enable physical connectivity to Peers, IXPs and DCs to establish peering

Peering Connectivity reference



# Order of Presentation (70)

## Session 1 (31)

### ISP/OTT/CDN/RESEARCH

Akamai  
AWS  
Biglobe  
Chief Telecom  
Cloud Telecom  
Converge  
DITO  
Edgio  
F5 Inc  
GLBB Japan  
Globe Telecom  
Google  
Hurricane Services  
IPTP  
Meta  
National Telecom  
Netflix

PLDT  
Radius Telecoms  
RISE  
RouteViews  
SoftBank  
SUNeVision/iAdvantage  
Tama Cable Network  
Telin  
TELSTRA  
TIM  
TWITCH  
University of GUAM  
VNPT  
Zenlayer

## Session 2 (27)

### IXP

BBIX  
BKNIX  
DE-CIX  
EPIX Jakarta  
EQUINIX  
GetaFix  
Globe IX  
HKIX  
Inter-LAN IX  
JKT-IX  
JPIX  
JPNAP  
JumboIX  
KINX

London Internet Exchange  
MARIIX  
MMIX  
MYIX  
NPIX  
NZIX  
PCTA IX  
Ryukyu IX (RIX)  
SUNeVision/iAdvantage  
SGIX  
Thailand IX  
TPIX  
VITRO

## Session 3 (7)

### DATA CENTER

at TOKYO  
Chief Telecom  
Digital Edge  
Globe DC  
SUNeVision/iAdvantage  
University of GUAM  
VITRO

## Session 4 (5)

### TRANSPORT

Chief Telecom  
Converge  
Globe Telecom  
Radius Telecoms  
RISE

# Session 1

## ISP/CDN/OTT/Research (31)

BATCH 1		
	Company Name/Facility	Speaker
1	Akamai	Tonie Wong
2	AWS	Brian Kim
3	BIGLOBE	Katsushi Yamaguchi
4	Chief Telecom	Jeff Hong
5	Cloud Telecom	Anthony Evangelista
6	Converge ICT	Reign Boniel
7	DITO	Kim Junaide
8	Edgio	Sajari Sarkan
9	F5 Inc	Alexandre Corso
10	GLBB	Tomo Tatsumi
11	Globe Telecom	Achie Atienza
12	Google	Ray
13	Hurricane Electric	Anurag Bhatia
14	IPTP	Kim Luu
15	Meta	Mark Chen
16	National Telecom	Surasit

17	Netflix	Nikki Seo
18	PLDT	Marvin Gaerlan
19	Radius Telecoms	Jimmy Alcala
20	RISE	Jeremiah Pabiona
21	RouteViews	Philip Smith
22	SoftBank	Satoshi Ishida
23	SUNeVision/iAdvantage	Andrew Lee
24	Tama Cable Network	Norihito Yasutaka
25	Telin	Amin Fajri
26	Telstra	Karen Claire Cerda
27	TIM	Jayson Chico
28	TWITCH	Seng Gei
29	University of GUAM	Jose Santiago
30	VNPT	Duc Pham
	Zenlayer	Shijia Zhu

# Akamai



<b>ASN</b>	<b>20940</b>
<b>Traffic Profile</b>	Content
<b>Traffic Volume</b>	250+Tbps
<b>Peering Policy</b>	Open
<b>Peering Locations</b>	Over 180+ IXs available worldwide
<b>Peeringdb Entry</b>	as20940.peeringdb.com
<b>Contact Information</b>	Akamai Peering Team: <a href="mailto:peering@akamai.com">peering@akamai.com</a> Tonie Wong: <a href="mailto:shwong@akamai.com">shwong@akamai.com</a>



Tonie Wong

# Akamai Prolexic



<b>ASN</b>	<b>32787</b>
<b>Traffic Profile</b>	DDoS Mitigation
<b>Traffic Volume</b>	Mostly inbound
<b>Peering Policy</b>	Selective
<b>Peering Locations</b>	APJ: Auckland, Chennai, Hong Kong, Mumbai, Melbourne, Osaka, Singapore, Sydney, Tokyo over 40+ IXs available
<b>Peeringdb Entry</b>	as32787.peeringdb.com
<b>Contact Information</b>	Akamai Peering Team: <a href="mailto:peering@akamai.com">peering@akamai.com</a> Tonie Wong: <a href="mailto:shwong@akamai.com">shwong@akamai.com</a>



Tonie Wong

# Amazon



<b>ASN</b>	<b>16509</b>
<b>Traffic Profile</b>	Cloud (balanced) + Content (outbound)
<b>Traffic Volume</b>	Huge
<b>Peering Policy</b>	Selective
<b>Peering Locations</b>	Please reference our peeringDB for common IX and PNI facilities.
<b>Peeringdb Entry</b>	<a href="https://AS16509.peeringdb.com/">https://AS16509.peeringdb.com/</a>
<b>Contact Information</b>	Peering APAC / <a href="mailto:peering-apac@amazon.com">peering-apac@amazon.com</a> Peering NOC / <a href="mailto:peering-to@amazon.com">peering-to@amazon.com</a>

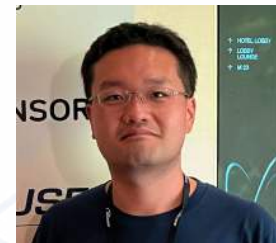


Brian





<b>ASN</b>	<b>2518</b>
<b>Traffic Profile</b>	Eyeballs
<b>Traffic Volume</b>	3Tbps
<b>Peering Policy</b>	Selective
<b>Peering Locations</b>	15 Locations : JP(BBIX,JP NAP,JP IX,EIE), HKIX, SG(EIE,BBIX) US(Any2West,BBIX-LA,EIE-SV), EU(AMS-IX) • New POP planned for March 2023 in Fukuoka Japan
<b>Peeringdb Entry</b>	as2518.peeringdb.com
<b>Contact Information</b>	Katsushi Yamaguchi - ka-yamaguchi@biglobe.co.jp peering@mesh.ad.jp



Katsushi

<b>ASN</b>	<b>17408</b>
<b>Traffic Profile</b>	Balanced
<b>Traffic Volume</b>	300G+
<b>Peering Policy</b>	Selective
<b>Peering Locations</b>	TPIX-TW, TWIX, Equinix Hong Kong, SGIX, HKIX, JPIX, AMSIX-IX Hong Kong, AMSIX-IX SG
<b>Peeringdb Entry</b>	<a href="https://www.peeringdb.com/asn/17408">https://www.peeringdb.com/asn/17408</a>
<b>Contact Information</b>	product@chief.com.tw ; peering@chief.com.tw



Wilson Chiu



Jeff Hong

# Cloud Telecom



<b>ASN</b>	149290
<b>Traffic Profile</b>	Eyeballs
<b>Traffic Volume</b>	Below 50Gbps
<b>Peering Policy</b>	Open
<b>Peering Locations</b>	Asia-Singapore : Equinix IX and SGIX
<b>Peeringdb Entry</b>	<a href="https://as149290.peeringdb.com">as149290.peeringdb.com</a>
<b>Contact Information</b>	Anthony Evangelista, <a href="mailto:anthony.evangelista@cloudtelecom.sg">anthony.evangelista@cloudtelecom.sg</a>



Anthony

<b>ASN</b>	<b>17639</b>
<b>Traffic Profile</b>	Eyeballs
<b>Traffic Volume</b>	7Tbps+
<b>Peering Policy</b>	Open
<b>Peering Locations</b>	Asia ( HK, SG, JP and PH ) US ( Los Angeles ) EU remote peering (AMS-IX, DE-CIX, LINX and NLIX)
<b>Peeringdb Entry</b>	as17639.peeringdb.com
<b>Contact Information</b>	Michael Basa <a href="mailto:michael.basa@convergeict.com">michael.basa@convergeict.com</a> Reign Boniel <a href="mailto:reyniel.boniel@convergeict.com">reyniel.boniel@convergeict.com</a> Peering Team <a href="mailto:peering@convergeict.com">peering@convergeict.com</a>



Mike

# DITO Telecommunity

<b>ASN</b>	<b>139831</b>
<b>Traffic Profile</b>	Eyeballs
<b>Traffic Volume</b>	480Gbps+
<b>Peering Policy</b>	Open
<b>Peering Locations</b>	2 locations : Hong Kong – Equinix-IX, HKIX Singapore – Equinix-IX, SGIX
<b>Peeringdb Entry</b>	<a href="https://www.peeringdb.com/as/139831">as139831.peeringdb.com</a>
<b>Contact Information</b>	<b>Kim Junaide</b> – <a href="mailto:kimhar.junaide@dito.ph">kimhar.junaide@dito.ph</a> <a href="mailto:peering@dito.com.ph">peering@dito.com.ph</a>



Kim

# Edgio [Limelight + Edgecast]



<b>ASN</b>	22822 & 15133
<b>Traffic Profile</b>	Content
<b>Traffic Volume</b>	100+ Tbps
<b>Peering Policy</b>	Selective
<b>Peering Locations</b>	Global
<b>Peeringdb Entry</b>	as22822.peeringdb.com as15133.peeringdb.com
<b>Contact Information</b>	peering-team@edg.io bnicklin@edg.io, mchan@edg.io, ssarkan@edg.io



# F5 Inc.



<b>ASN</b>	<b>35280</b>
<b>Traffic Profile</b>	Content
<b>Traffic Volume</b>	1-5Tbps
<b>Peering Policy</b>	Selective
<b>Peering Locations</b>	<ul style="list-style-type: none"><li>- APAC (JP/HK/SG/AU/IN)</li><li>- Europe (FR/GB/NL/DE/ES/PT/SE)</li><li>- AMER (CA/US/BR)</li><li>- Middle East (coming 2023)</li></ul>
<b>Peeringdb Entry</b>	as35280.peeringdb.com
<b>Contact Information</b>	Peering Team <a href="mailto:peering@f5.com">peering@f5.com</a> Alexandre Corso <a href="mailto:a.corso@f5.com">a.corso@f5.com</a>



Alexandre  
Corso

<b>ASN</b>	<b>55900</b>
<b>Traffic Profile</b>	Balanced
<b>Traffic Volume</b>	300-500Gbps
<b>Peering Policy</b>	Selective
<b>Peering Locations</b>	<p><b>IX:</b>  BBIX-Tokyo, JPNAP-Tokyo, JPIX-Tokyo ,Equinix-Tokyo, BBIX Osaka, RIX Okinawa <b>POPs:</b>  Tokyo (TY2, TY4, TK3, CC1,BBT-Otemachi, NTT Com Yokohama, <b>GC1-Minamisuna</b>)  Osaka (OS3, NTT Data Dojima4)  Okinawa (FRT, NTT Com Naha, <b>GC2-Nago,GC2-Ginozason</b>) <b>*GC: GLBB Colo Service</b></p>
<b>Peeringdb Entry</b>	as55900.peeringdb.com
<b>Contact Information</b>	Tomo Tatsumi – <a href="mailto:noc@glbb.jp">noc@glbb.jp</a>



Tomo





<b>ASN</b>	<b>4775</b>
<b>Traffic Profile</b>	Eyeballs
<b>Traffic Volume</b>	6Tbps+
<b>Peering Policy</b>	Open
<b>Peering Locations</b>	25 locations : US, Asia(JPN, HKG, SNG, PHL) EU (remote Peering)
<b>Peeringdb Entry</b>	as4775.peeringdb.com
<b>Contact Information</b>	<b>Achie Atienza</b> - <a href="mailto:vbatiENZA@globe.com.ph">vbatiENZA@globe.com.ph</a> <a href="mailto:peering@globe.com.ph">peering@globe.com.ph</a>



Achie

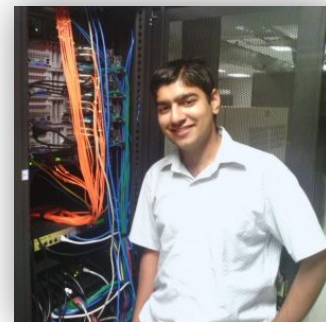
<b>ASN</b>	<b>15169</b>
<b>Traffic Profile</b>	Content / Cloud
<b>Traffic Volume</b>	XL
<b>Peering Policy</b>	Open
<b>Peering Locations</b>	PH: Globe QC2, Vitro Makati 2 Please check peeringdb for other countries
<b>Peeringdb Entry</b>	as15169.peeringdb.com
<b>Contact Information</b>	<a href="https://peering.google.com/iwantpeering">https://peering.google.com/iwantpeering</a>



Ray



<b>ASN</b>	<b>6939</b>
<b>Traffic Profile</b>	Balanced
<b>Peering Policy</b>	Open
<b>Peering Locations</b>	295 IXPs across America, Asia, Europe, Oceania Detailed list: <a href="http://pop.he.net">pop.he.net</a>
<b>Peeringdb Entry</b>	<a href="http://as6939.peeringdb.com">as6939.peeringdb.com</a>
<b>Contact Information</b>	<a href="mailto:peering@he.net">peering@he.net</a>



Anurag Bhatia

ASN	41095 (GLOBAL)	263681 (LATAM)	51601 (EMEA)	135993 ( VIETNAM)	140951 (APAC)
<b>Traffic Profile</b>	1:3 Balanced where content prevails	heavily inbound	heavily inbound	heavily inbound	heavily inbound
<b>Traffic Volume</b>	1 Tbps+	>100 Gbps	>100 Gbps	5-10 Gbps	>100 Gbps
<b>Peering Policy</b>	Restrictive	Selective	Selective	Open	Selective
<b>Peering Locations</b>	236+ locations on-net and present in many main IXs (Equinix SY/SG/HK/TY, JPNAP, JPIX, BBIX, Netnod, Dtel-IX, DE-CIX, AMS-IX, Coresite-Any2, SIX, LINX, KINX, MSK-IX, etc.)	<b>IXs:</b> - JumbolX Peru - PIT Chile IX - IX.BR Brazil  <b>DCs:</b> - Equinix SP3 Sao Paulo, Brazil - Mob Telecom Fortaleza, Brazil - Americatel Perú Lima - CenturyLink Data Center Lima Peru - Level (3) Santiago de Chile, Chile	<b>IXs:</b> - JumbolX Limassol Cyprus - Eurasia Peering IX, Moscow - SPEED-IX, Dronten, NL  <b>DCs:</b> - K1 Limassol Cyprus - Matrix 4, Amsterdam - Moscow M9, Russia - Equinix FR5&6, Frankfurt - Equinix AM1 Amsterdam - Equinix LD4,5&8, London - Equinix ZH4, Zurich - Equinix MD2, Madrid - Equinix Bromma SK1, Stockholm - MIX Milan - Telehouse Paris 2 Voltaire, Paris - Sofia Data Center/Sofia Teleport - Equinix DX1 (Datamena) Dubai - Infonas DC Manama Bahrain - Teraco Johannesburg Campus, etc.	<b>DCs:</b> - CMC HCMC - CMC Hanoi - Da Nang Software Park	<b>IXs:</b> - KINX Dogok Seoul - SGIX, Singapore - AUUX, Australia - JPNAP Tokyo  <b>DCs:</b> - CX1 Cyberjaya, Malaysia - eASP DC, Chief building, Taipei - Cyber 1 DC Jakarta, Indonesia - Equinix HK1-5, Hong Kong - Equinix SG1-4, Singapore - Equinix SY1-7, Sydney - Equinix TY1-10, Tokyo - TCC Technology Data Center-Bangkok,Thailand - Web Werks Mumbai DC1&2, India etc.
<b>Peeringdb Entry</b>	as41095.peeringdb.com	as263681.peeringdb.com	as51601.peeringdb.com	as135993.peeringdb.com	as140951.peeringdb.com
<b>Contact Information</b>	Mr. Andy Le - peering@iptp.net				



<b>ASN</b>	<b>32934</b>
<b>Traffic Profile</b>	Content
<b>Traffic Volume</b>	100+Tbps
<b>Peering Policy</b>	<a href="https://www.facebook.com/peering/">https://www.facebook.com/peering/</a>
<b>Peering Locations</b>	Global, please refer to peeringDB for our POPs.
<b>Peeringdb Entry</b>	<a href="https://www.peeringdb.com/asn/32934">https://www.peeringdb.com/asn/32934</a>
<b>Contact Information</b>	Matt Jansen, Mark Chen, < <a href="mailto:peering@fb.com">peering@fb.com</a> >

<b>ASN</b>	<b>4631</b>
<b>Traffic Profile</b>	NSP
<b>Traffic Volume</b>	500 Gbps
<b>Peering Policy</b>	Open
<b>Peering Locations</b>	1. Equinix SG 2. Equinix HK 3. BBIX HK 4. BBIX SG 5. BBIX Tokyo 6. HKIX 7. JPNAP 8. AMS-IX 9. DE-CIX 10. LINX 11. NL-IX 12. CORESITE ANY2 LA
<b>Peeringdb Entry</b>	as4651.peeringdb.com
<b>Contact Information</b>	Peering Team (peering@cat.net.ph)



<b>ASN</b>	<b>2906</b>
<b>Traffic Profile</b>	Content
<b>Peering Policy</b>	Open
<b>Peering Locations</b>	Please see peering DB entry for complete list
<b>Peeringdb Entry</b>	as2906.peeringdb.com
<b>Contact Information</b>	peering@netflix.com



Ian

[i@netflix.com](mailto:i@netflix.com)

Nihit

[ntandon@netflix.com](mailto:ntandon@netflix.com)

Nayeong (Nikki)

[nseo@netflix.com](mailto:nseo@netflix.com)

Jocelyn

[jooi@netflix.com](mailto:jooi@netflix.com)



<b>ASN</b>	<b>9299 / 10139</b>	
<b>Traffic Profile</b>	Eyeballs	
<b>Traffic Volume</b>	> 7 Tbps	
<b>Peering Policy</b>	Selective	
<b>Peering Locations</b>	Equinix IX (HK, Tokyo, Sg) BBIX (HK, Tokyo, Sg) SGIX, JPNAP Ams-IX, Dec-IX, NLIX, France IX, Swiss IX Any2, NYIIX, Seattle IX VIX & PHIX	HK - Equinix HK2 , HK - Mega-I, Japan – Equinix Ty6 LA - Core Site One Wilshire Singapore – Equinix SG3, Singapore – Global Switch, Vitro Data Centers
<b>Peeringdb Entry</b>	as9299.peeringdb.com	
<b>Contact Information</b>	<u><a href="mailto:peering@pldt.com.ph">peering@pldt.com.ph</a></u>	





# Radius Telecom



**radius**

Agility. Versatility. Reliability.  
a Meralco Company

<b>ASN</b>	<b>55821</b>																
<b>Traffic Profile</b>	Eyeballs																
<b>Traffic Volume</b>	500Gbps +																
<b>Peering Policy</b>	Open																
<b>Peering Locations</b>	<table border="0"> <tr> <td><b><u>Hong Kong</u></b></td> <td><b><u>Singapore</u></b></td> <td><b><u>Philippines</u></b></td> <td><b><u>US</u></b></td> </tr> <tr> <td>- HKIX</td> <td>- Equinix IX</td> <td>- Globe IX</td> <td>- Q4/2023</td> </tr> <tr> <td>- BBIX</td> <td>- SGIX</td> <td>- PhOpenIX</td> <td></td> </tr> <tr> <td></td> <td>- DE-CIX</td> <td>- GetaFix</td> <td></td> </tr> </table>	<b><u>Hong Kong</u></b>	<b><u>Singapore</u></b>	<b><u>Philippines</u></b>	<b><u>US</u></b>	- HKIX	- Equinix IX	- Globe IX	- Q4/2023	- BBIX	- SGIX	- PhOpenIX			- DE-CIX	- GetaFix	
<b><u>Hong Kong</u></b>	<b><u>Singapore</u></b>	<b><u>Philippines</u></b>	<b><u>US</u></b>														
- HKIX	- Equinix IX	- Globe IX	- Q4/2023														
- BBIX	- SGIX	- PhOpenIX															
	- DE-CIX	- GetaFix															
<b>PeeringDB Entry</b>	<a href="https://www.peeringdb.com/net/15487">https://www.peeringdb.com/net/15487</a>																
<b>Contact Information</b>	<b>Jimmy C. Alcala</b> - <a href="mailto:jcalcala@radius.ph">jcalcala@radius.ph</a> <a href="mailto:peering@radius.ph">peering@radius.ph</a>																



Jim

**APRICOT 2023**

APNIC 55



<b>ASN</b>	<b>63927</b>
<b>Traffic Profile</b>	Eyeballs
<b>Traffic Volume</b>	20-50Gbps
<b>Peering Policy</b>	Open
<b>Peering Locations</b>	Major locations and IXPs within Philippines, Singapore, and Hong Kong
<b>Peeringdb Entry</b>	<a href="https://asn63927.peeringdb.com">asn63927.peeringdb.com</a>
<b>Contact Information</b>	<a href="mailto:noc@rise.ph">noc@rise.ph</a> Jeremiah Pabiona <a href="mailto:jeremiah.pabiona@rise.ph">jeremiah.pabiona@rise.ph</a>



JP



# RouteViews



<b>ASN</b>	<b>6447</b>
<b>Traffic Profile</b>	Educational/Research
<b>Traffic Volume</b>	Under 100Mbps
<b>Peering Policy</b>	Open
<b>Peering Locations</b>	>36 IXes around the world
<b>Peeringdb Entry</b>	<a href="https://as6447.peeringdb.com">https://as6447.peeringdb.com</a>
<b>Contact Information</b>	John Kemp, Hans Kuhn, Philip Smith <help@routeviews.org>



Philip

<b>ASN</b>	<b>17676</b>
<b>Traffic Profile</b>	Eyeballs
<b>Traffic Volume</b>	non-disclosure
<b>Peering Policy</b>	Selective
<b>Peering Locations</b>	<ul style="list-style-type: none"> <li>• BBIX (Tokyo/Osaka/HKG/SNG/LA/AMS) JPNAP (Tokyo/Osaka), SIX Seattle, ANY2, HKIX, EIESG</li> <li>• Tokyo: AT Tokyo, NTT Data Otemachi, KDDI Otemachi</li> <li>• Osaka: Dojima 4th, Equinix OS1, <b>Sonezaki(New!)</b></li> <li>• Fukuoka: Planning</li> <li>• US: Coresite OWB, Equinix SV5, Seattle WBX</li> <li>• EU: <b>AMS9(New!)</b> ASIA: HKG MEGA-I / SNG: SG1</li> </ul>
<b>Peeringdb Entry</b>	<a href="https://as17676.peeringdb.com/">https://as17676.peeringdb.com/</a>
<b>Contact Information</b>	Satoshi Ishida <satoshi.ishida@g.softbank.co.jp> Fei Liu <fei.liu@g.softbank.co.jp>



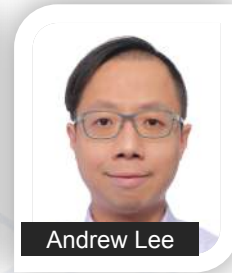
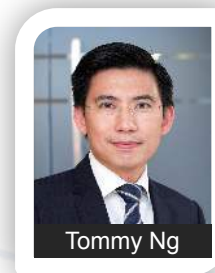
Satoshi Ishida



Fei Liu

<b>ASN</b>	<b>9729</b>
<b>Traffic Profile</b>	Balanced (Outbound from OTT / Enterprise)
<b>Traffic Volume</b>	10 Gbps
<b>Peering Policy</b>	Open
<b>Peering Locations</b>	<ul style="list-style-type: none"> <li>○ HKIX/HKIX1b (Hong Kong)</li> <li>○ HKIX3/HKIX3b (@MEGA Campus, Hong Kong)</li> <li>○ iAIX (@MEGA Campus, Hong Kong) <b>(MEGA Campus: MEGA-i, MEGA Plus, MEGA Two)</b></li> </ul>
<b>Peeringdb Entry</b>	as9729.peeringdb.com
<b>Contact Information</b>	<b>Tommy Ng</b> ( <a href="mailto:tommyng@sunevision.com">tommyng@sunevision.com</a> ) <b>Andrew Lee</b> ( <a href="mailto:andrewlee@sunevision.com">andrewlee@sunevision.com</a> )

#### Peering Advisors



#### Updates

- **Asia Direct Cable (ADC) landed Hong Kong segment at SUNeVision's HKIS-1**, the first and only carrier-neutral Cable Landing Station (CLS) in Hong Kong (Jan 2023)
- **SUNeVision's second Cable Landing Station (HKIS-2)** is under development

# Tama Cable Network



<b>ASN</b>	131958
<b>Traffic Profile</b>	Eyeballs
<b>Traffic Volume</b>	25Gbps
<b>Peering Policy</b>	Open / Selective / Restrictive
<b>Peering Locations</b>	IX:JPNAP Tokyo、BBIX Tokyo、JPIX Tokyo、 Any2West、NYIIX LA Private Peering Facilities: Comspace 1 (Digital Edge TYO2)
<b>Peeringdb Entry</b>	as131958.peeringdb.com
<b>Contact Information</b>	Norihito Yasutaka - noc@tcnnet.co.jp



Norihito

<b>ASN</b>	<b>7713</b>
<b>Traffic Profile</b>	Eyeballs
<b>Traffic Volume</b>	10 - 20Tbps
<b>Peering Policy</b>	Restrictive
<b>Peering Locations</b>	<ul style="list-style-type: none"><li>✓ US (LA, NY, Ashburn, San Jose, Palo Alto)</li><li>✓ EU (DEU, FRA, NLD, GBR)</li><li>✓ Asia (IDN, SGP, MYS, JPN, HKG, TWN, MMR)</li></ul>
<b>Peeringdb Entry</b>	<a href="https://as7713.peeringdb.com">https://as7713.peeringdb.com</a>
<b>Contact Information</b>	Global NOC <noc@telin.net> Peering Global Team <peering@telin.net>



Amin

# Telstra International



<b>ASN</b>	<b>4637</b>
<b>Traffic Profile</b>	Balanced
<b>Traffic Volume</b>	9+ Tbps
<b>Peering Policy</b>	Selective
<b>Peering Locations</b>	Major locations in US, APAC, EU
<b>Peeringdb Entry</b>	as4637.peeringdb.com
<b>Contact Information</b>	TI.Peering@team.telstra.com



Karen





<b>ASN</b>	<b>135423</b>
<b>Traffic Profile</b>	Eyeballs
<b>Traffic Volume</b>	Under 20Gbps
<b>Peering Policy</b>	Open
<b>Peering Locations</b>	Asia (PH, HK and SG)
<b>Peeringdb Entry</b>	<a href="https://peeringdb.com/net/13272">peeringdb.com/net/13272</a>
<b>Contact Information</b>	Jayson Chico <a href="mailto:jayson.chico@timcorp.net.ph">jayson.chico@timcorp.net.ph</a> TIM NOC – <a href="mailto:dcs.noc@timcorp.net.ph">dcs.noc@timcorp.net.ph</a>



Jayson Chico

# Amazon IVS / Twitch



<b>ASN</b>	<b>46489</b>
<b>Traffic Profile</b>	Content
<b>Traffic Volume</b>	Undisclosed
<b>Peering Policy</b>	Selective
<b>Peering Locations</b>	Major Datacenters and IXPs in APAC
<b>Peeringdb Entry</b>	<a href="https://www.peeringdb.com/net/1956">https://www.peeringdb.com/net/1956</a>
<b>Contact Information</b>	Seng Gei ANG, anseng@twitch.tv, peering@twitch.tv



Seng Gei

# University of Guam



UNIVERSITY OF  
**GUAM**  
UNIBETSEDÁT GUÁHAN



Jose



Karl

<b>ASN</b>	<b>395400</b>
<b>Traffic Profile</b>	Educational/Research
<b>Traffic Volume</b>	~ 2 Gbps
<b>Peering Policy</b>	Open
<b>Peering Locations</b>	Directly or via MARIIX at the University of Guam Datacenter, and GOREX at the GNC CLS
<b>Peeringdb Entry</b>	<a href="https://as395400.peeringdb.com">https://as395400.peeringdb.com</a>
<b>Contact Information</b>	Jose Santiago, Ronald Marfega, Karl Lacanilao, Vincent Dela Cruz <uognoc@triton.uog.edu>

<b>ASN</b>	<b>45899</b>
<b>Traffic Profile</b>	Eyeballs
<b>Traffic Volume</b>	5Tbps+
<b>Peering Policy</b>	Open
<b>Peering Locations</b>	Asia (JPN, HKG, SNG) EU, US (remote peering)
<b>Peeringdb Entry</b>	as45899.peeringdb.com
<b>Contact Information</b>	<b>Duc Pham</b> - <a href="mailto:phamquangduc@vnpt.vn">phamquangduc@vnpt.vn</a> <a href="mailto:peering@vnpt.vn">peering@vnpt.vn</a>



Duc

<b>ASN</b>	<b>21859, 4229</b>
<b>Traffic Profile</b>	Content
<b>Traffic Volume</b>	12Tbps+
<b>Peering Policy</b>	Selective
<b>Peering Locations</b>	APAC (SG, HK, JP,TW,KR, ID, PH, VN,TH, MY, MM,IN, BD, PK,AU), MEA (TR, AE, ZA, NG, KE, EG, SA), EU, US, SA
<b>Peeringdb Entry</b>	as21859.peeringdb.com, as4229.peeringdb.com
<b>Contact Information</b>	Shijia Zhu <a href="mailto:shijia.zhu@zenlayer.com">shijia.zhu@zenlayer.com</a> ; <a href="mailto:CapacityPlanning-IP@zenlayer.com">CapacityPlanning-IP@zenlayer.com</a>



Shijia

# Session 2 (27)

## IXP

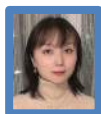
BATCH 2		
	Company Name/Facility	Speaker
1	BBIX	Lisa Lu
2	BKNIX	Patama
3	DE-CIX ASIA	Marcus Tan
4	EPIX Jakarta	Raphael Ho
5	EQUINIX	Alma Gonzales
6	GetaFix	Gio Bacareza
7	Globe Telecom	Achie Atienza
8	HKIX	Kenneth Chen
9	InterLAN IX	Christian
10	JKT-IX	Ko Togashi
11	JPIX	Mugi Ma
12	JPNAP	Toyama
13	JumboIX (IPTP)	Kim Luu
14	KINX	Gloria Lee
15	London Internet Exchange	Halil Kama
16	Mariana Islands IX (MARIIX)	Jose Santiago

17	MMIX	Thein Myint Khine
18	MYIX	Raja Moran
19	NPIX	Rupesh Shresha
20	NZIX	Dave Mill
21	PCTAIX	Michael Pablo Dela Paz
22	Ryukyu IX (RIX)	Takanori Furushio
23	SGIX	Denny Ow
24	SUNeVision/iAdvantage	Andrew Lee
25	Thailand IX	Surasit
26	TPIX	Wilson Chiu
27	VITRO	J.A Taneo

IXP Name/s	BBIX Tokyo	BBIX Osaka	BBIX Fukuoka	BBIX Singapore	BBIX Hong Kong	BBIX Thailand	BBIX USA	BBIX Europe
Location	Tokyo, Sendai, Okinawa	Osaka	Fukuoka	Singapore	Hong Kong	Bangkok	LA, Chicago, Dallas, Miami, San Jose	Amsterdam, London, Marseille
POP	<ul style="list-style-type: none"> <li>NTT Data Otemachi</li> <li>Digital Edge TYO2 (ComSpace 1)</li> <li>Equinix TY2/TY4</li> <li>AT TOKYO CC1</li> <li>Softbank Maruyama CLS</li> <li>NTT Communications Nexcenter</li> <li>Colt DCS Tokyo Shiohama DC/Inzai 1 DC</li> <li>SCSK nextTDC Chiba Center</li> <li>Softbank Tokyo No.4 Data Center</li> <li>TOHKnet Sendai Central Data Center</li> <li>FRT Data Center (iDC)</li> </ul>	<ul style="list-style-type: none"> <li>NTT Data Dojima</li> <li>Equinix OS1</li> <li>Equinix OS3</li> <li>NTT Smart Connect Dojima</li> <li>AT TOKYO DC12</li> <li>Sonezaki Data Center</li> <li><b>Digital Edge OSA1 (New!)</b></li> </ul>	<ul style="list-style-type: none"> <li>QTnet Fukuoka No.3 Data Center</li> <li>AT TOKYO QC1</li> </ul>	<ul style="list-style-type: none"> <li>Equinix SG1</li> <li>Equinix SG5</li> <li><b>Global Switch (New!)</b></li> </ul>	<ul style="list-style-type: none"> <li>Mega-i</li> <li>Equinix HK1</li> </ul>	<ul style="list-style-type: none"> <li>True IDC North Muang Thong</li> <li>CAT Tower BangRak</li> </ul>	<ul style="list-style-type: none"> <li>Coresite LA1</li> <li>Equinix SV5</li> <li>Equinix CH1</li> <li>Equinix DA6</li> <li>Equinix MI1</li> </ul>	<ul style="list-style-type: none"> <li>Interxion AMS9</li> <li>Telehouse Dockland North 2</li> <li>Interxion MRS2</li> </ul>
# of ASNs	Total 300+							
Peak Traffic	Total 5.47T+							
Peeringdb	<a href="https://www.peeringdb.com/search?q=bbix">https://www.peeringdb.com/search?q=bbix</a>							
Contact	<a href="mailto:bbix-sales@bbix.net">bbix-sales@bbix.net</a>							



Iku



Lisa



Araki



Liyu



Tomomi



Kikuchi



IXP Name/s	BKNIX	BKNIX Chiang Mai
Location	Bangkok, Thailand	Chiang Mai, Thailand
Points of Presence	<ul style="list-style-type: none"> <li>TCC Bangna (supported by ISOC)</li> <li>CSL - CW Tower (supported by ISOC)</li> <li>AIMS DC TH</li> <li>NTT BKK2 (supported by ISOC)</li> <li>STT Bangkok1</li> </ul>	<ul style="list-style-type: none"> <li>Symphony (supported by APNIC)</li> <li>ITSC, Chiang Mai University</li> </ul>
# of connected ASNs	50	4
Peak Traffic	143 G	1.8 G
Route Server	Yes <BIRD 2 + IRR&RPKI>	Yes <BIRD 2 + IRR&RPKI>
Peeringdb/IXPdb	<a href="https://www.peeringdb.com/ix/1025">https://www.peeringdb.com/ix/1025</a>	<a href="https://www.peeringdb.com/ix/3303">https://www.peeringdb.com/ix/3303</a>



Patama  
Nan  
Thanapat

#### Recent updates:

Recent members: Riot Games, Fastly, AWS, HE, ...

Remote peering service to/from JPNAP Tokyo by NTT Thailand

Remote peering service is available through PCCW Console connect

BKNIX Peering forum will be held during 15-16 May 2023

Contact Information : [info@bknix.co.th](mailto:info@bknix.co.th), [peering@bknix.co.th](mailto:peering@bknix.co.th)



# DE-CIX



<b>IXP Name</b>	<b>DE-CIX ASIA</b>
<b>Location</b>	Singapore, Malaysia, Brunei, Philippines
<b>Point of Presence</b>	<p><u>MY</u>: AIMS KL, CJ1 Cyberjaya, CDF CX1, CX2, OpenDC (JB1, JB2), PLTPro,</p> <p><u>SG</u>: Digital Realty SIN (11 Loyang Close, 29A Intl Business Pk, 3 Loyang Way), Global Switch SG, STT Tai Seng 1, backhaul from EQXSG1 available</p> <p><u>BN</u>: UNN Tungku CLS</p> <p><u>PH</u>: VITRO Makati DC 2 – VM2, VITRO Pasig Data Center – VPS</p>
<b># of connected ASNs</b>	70+
<b>Peak Traffic</b>	90Gbps+
<b>Route Server</b>	Yes
<b>Peeringdb / IXPdb</b>	<a href="https://www.peeringdb.com/ix/3472">https://www.peeringdb.com/ix/3472</a>



**Marcus Tan**

[Marcus.tan@de-cix.net](mailto:Marcus.tan@de-cix.net)



**John Hill**

[John.hill@de-cix.et](mailto:John.hill@de-cix.et)

<b>IX Name</b>	<b>EPIX Jakarta</b>
<b>City, Country</b>	Jakarta, Indonesia
<b>Point of Presence</b>	<ul style="list-style-type: none"> <li>• EDGE1 (Digital Edge JKT1)</li> <li>• Cyber1/NTT via Campus Fiber</li> <li>• PT DCI</li> <li>• NeuCentriX Jakarta</li> <li>• EDGE2 (Digital Edge JKT2) – Q4 2023</li> </ul>
<b># of connected ASN</b>	3
<b>Peak traffic</b>	300Mbps
<b>Route Servers</b>	Yes (BIRD 2.0 x 2)
<b>PeeringDB</b>	<a href="https://www.peeringdb.com/ix/4047">https://www.peeringdb.com/ix/4047</a>

## Peering Contact



Horatio

[Horatio@digitaledge.com](mailto:Horatio@digitaledge.com)  
[Raphael.Ho@digitaledge.com](mailto:Raphael.Ho@digitaledge.com)



Raf



- 400Gbps Support!
- Launched Nov 2022
- **Join us at EPICAsia! Jakarta, August 2023**



<b>IX Name</b>	<b>EQUINIX</b>
<b>Location</b>	5 Continents, 23 Countries, 44 Metros around the world
<b>Point of Presence</b>	197 Equinix IBXs
<b>New Hot Presence</b>	Melbourne, Perth, Osaka, Seoul
<b>AS Number</b>	24115
<b># of connected ASN</b>	2159 unique ASNs
<b>Traffic Type</b>	Balanced
<b>Traffic Volume</b>	21.16 Tb/s
<b>Route Servers</b>	Yes (BIRD)
<b>Supported Features</b>	RPKI, RTBH, Private VLAN
<b>Peeringdb</b>	<a href="http://as24115.peeringdb.com/">http://as24115.peeringdb.com/</a>

## Service Providers &amp; Interconnection Team



**Joanne Chan**  
Japan  
[joachan@ap.equinix.com](mailto:joachan@ap.equinix.com)  
m



**Maggie Lee**  
HK & Greater China  
[maglee@ap.equinix.com](mailto:maglee@ap.equinix.com)  
m



**Matt Gully**  
ANZ & Pacific Islands  
[mgully@ap.equinix.com](mailto:mgully@ap.equinix.com)



**Angus Yip**  
SG & South-East Asia  
[nyip@ap.equinix.com](mailto:nyip@ap.equinix.com)  
m



**Claire Yu**  
Korea  
[myu@ap.equinix.com](mailto:myu@ap.equinix.com)  
m



<https://ix.equinix.com/>



IXP Name/s	GetaFIX (Manila)	GetaFIX (Cebu)
Location	Metro Manila, Philippines	Cebu City, Philippines
Point of Presence	Vitro Makati 1, Vitro Makati 2, Vitro Pasig, Vitro Paranaque, TIM Carmona, Globe MK2	Vitro Cebu 1, Cyberzone, Crown 7
# of connected ASNs	65	4
Peak Traffic	130 Gbps	13 Gbps
Route Server	2x based on BIRD	2x based on BIRD
Peeringdb/IXPdb	<a href="https://www.peeringdb.com/ix/2345">https://www.peeringdb.com/ix/2345</a>	<a href="https://www.peeringdb.com/ix/3558">https://www.peeringdb.com/ix/3558</a>



Mok Alfonso, Domestic  
mok.alfonso@getafix.ph



Jousas Rumbutis, International  
jousas.rumbutis@getafix.ph



Gio Bacareza, GetaFIX Head  
gio.bacareza@getafix.ph



# Globe IX (GIX)



IXP Name/s	GIX	GIX Cebu	GIX Davao / Quezon City
<b>Location</b>	Makati, Philippines	Cebu, Philippines	Davao & Quezon City, Ph
<b>Point of Presence</b>	Globe MK2	Globe CB1	Globe DV1 & QC2
<b># of connected ASNs</b>	16	Ongoing TBD	Ongoing TBD
<b>Peak Traffic</b>	64Gbps+	Ongoing TBD	Ongoing TBD
<b>Route Server</b>	Yes	Ongoing TBD	Ongoing TBD
<b>Peeringdb / IXPdb</b>	<a href="https://www.peeringdb.com/ix/317">https://www.peeringdb.com/ix/317</a>	<a href="https://www.peeringdb.com/ix/3589">https://www.peeringdb.com/ix/3589</a>	TBD



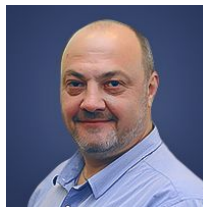
<b>IX Name/s</b>	<b>Hong Kong Internet eXchange (HKIX)</b>
<b>Location</b>	Hong Kong
<b>Point of Presence</b>	<b>Core Sites:</b> <b>HKIX1 &amp; HKIX1b @CUHK / HKIX1c @Cyberport</b> <b>HKIX-R&amp;E:</b> HKIX-R&E@MEGA-i <b>Satellite Sites:</b> <b>HKIX2@CITIC, HKIX3/HKIX3b@iAdvantage, HKIX4@NTT, HKIX5@KDDI</b>
<b># of connected ASN</b>	346
<b>Peak traffic</b>	2.4Tbps
<b>Route Servers</b>	Yes (Cisco ASR1002-HX) for IPv4 and IPv6
<b>Peeringdb / IXPdb</b>	Website: <a href="https://www.hkix.net">https://www.hkix.net</a> PeeringDB: <a href="https://www.peeringdb.com/ix/42">https://www.peeringdb.com/ix/42</a> Resellers: <a href="https://www.hkix.net/hkix/Resellers.htm">https://www.hkix.net/hkix/Resellers.htm</a>



# InterLAN-IX

<b>IXP Name/s</b>	<b>InterLAN-IX (InterLAN Internet Exchange Romania)</b>
<b>Locations</b>	Bucharest, Arad, Cluj-Napoca, Constanta, Craiova, Iasi, Suceava, Timisoara
<b>Points of Presence</b>	NXDATA-1/2, Voxility IRD, Ines Group, M24Seven, Teletrans HB, Radiocom
<b># of connected ASNs</b>	130
<b>Peak Traffic</b>	500 Gbps
<b>Route Server</b>	Yes, BIRD v2 2.0.8
<b>Peeringdb/IXPdb</b>	<a href="https://www.peeringdb.com/ix/270">https://www.peeringdb.com/ix/270</a> / <a href="https://ixpdb.euro-ix.net/en/ixpdb/ixp/37/">https://ixpdb.euro-ix.net/en/ixpdb/ixp/37/</a>

Contact Persons  
Cristian, Eric  
[peering@interlan.ro](mailto:peering@interlan.ro)



# JKT-IX



<b>IXP Name/s</b>	JKT-IX	JKT-IX Bali, Surabaya, Bandung, Yogyakarta
<b>Location</b>	Jakarta	Each regional DC
<b>Point of Presence</b>	NTT DC JKT-2, NTT DC JKT-3, Cyber-1 APJII DC, IDC 3D	To be announced in 2023
<b># of connected ASNs</b>	328	
<b>Peak Traffic</b>	+400Gbps	
<b>Route Server</b>	Yes	
<b>Peeringdb / IXpdb</b>	<a href="https://www.peeringdb.com/ix/2476">https://www.peeringdb.com/ix/2476</a>	





IX Name/s	JPIX TOKYO	JPIX OSAKA	JPIX FUKUOKA
City, Country	Tokyo, Nagoya and Okinawa, Japan	Osaka and Nagoya, Japan	Fukuoka, Japan
Point of Presence	<ul style="list-style-type: none"> <li>KDDI TELEHOUSE Otemachi</li> <li>NTT DATA Otemachi</li> <li>Comspace I</li> <li>Equinix TY2</li> <li>AT Tokyo</li> <li>COLT TDC1</li> <li>NTT DATA Mitaka DC East</li> <li>NTT COM Nexcenter DC</li> <li>Otemachi Place</li> <li>Meitetsucom DC (Nagoya)</li> <li>OCH DC (Okinawa)</li> <li>MC-Digital Realty - NRT10</li> </ul>	<ul style="list-style-type: none"> <li>NTT DATA Dojima aka. Dojima Bldg. #4</li> <li>KDDI TELEHOUSE Osaka 1&amp;2</li> <li>Equinix OS1</li> <li>Meitetsucom DC (Nagoya)</li> <li>NTT Sonezaki Data Center (Dojima Campus)</li> <li>NTT Sonezaki Data Center</li> <li>MC-Digital Realty Osaka - KIX11</li> </ul>	<ul style="list-style-type: none"> <li>QTnet DC3</li> <li>AT Tokyo QC1</li> </ul>
# of connected ASNs	253	89	Just opened
Peak Traffic	2.5Tbps	960Gbps	Just opened
Route Servers	Yes (Cisco IOS-XE)	Yes (Cisco IOS-XE)	No
PeeringDB	<a href="https://www.peeringdb.com/ix/30">https://www.peeringdb.com/ix/30</a>	<a href="https://www.peeringdb.com/ix/564">https://www.peeringdb.com/ix/564</a>	<a href="https://www.peeringdb.com/ix/3721">https://www.peeringdb.com/ix/3721</a>
Contact Information	hamada@jpix.ad.jp, nanami@jpix.ad.jp, mugima@jpix.ad.jp, miao@jpix.ad.jp		



T.Hamada



K.Nanami



Mugi



Miao

## Recent updates

- Remote peering to JPIX TOKYO via ARELION, Megaport and IPTP etc.
- Our IX switch in Nagoya can offer both JPIX TOKYO VLAN and OSAKA one.



# JPNAP



Toyama



Uchiyama



Kevin&Yuki



Hide



IX Name	JPNAP Tokyo	JPNAP Osaka	JPNAP Fukuoka	JPNAP Sendai
City, Country	Tokyo, Japan	Osaka, Japan	Fukuoka, Japan	Sendai, Japan
Point of Presence	<ul style="list-style-type: none"> <li>•NTTCom TK1/TK7</li> <li>•Equinix TY2/TY4</li> <li>•ComSpace 1</li> <li>•AT Tokyo (CC1)</li> <li>•Colt (Shiohama)</li> <li>•BBT (Otemachi)</li> </ul> Total:11	<ul style="list-style-type: none"> <li>•NTT Data Dojima (Dojima #4)</li> <li>•NTT Dojima #3</li> <li>•NTT Dojima #1</li> <li>•Equinix OS1</li> </ul>	<ul style="list-style-type: none"> <li>•QTnet DC#3</li> </ul>	<ul style="list-style-type: none"> <li>•NTT EAST Miyagi DC</li> </ul>
# of connected ASN	250AS			
Peak traffic (5.2T)	3.6T	1.5T	45G	10M
Route Servers	Yes (2*BIRD2.0)			
RPKI	Yes			
Contact info	info@mfeed.ad.jp			



# JumboIX

IXP Name/s	JumboIX Peru	JumboIX Cyprus
<b>Location</b>	Lima, Peru	Limassol, Cyprus
<b>Point of Presence</b>	CenturyLink Data Center - Lima, Peru Equinix LM1 - Lima, Peru IPTP, San Isidro - Lima, Peru	IPTP, Kermia 1 - Limassol, Cyprus
<b># of connected ASNs</b>	23	4
<b>Peak Traffic</b>	100G+	40G+
<b>Route Server</b>	BGP4	BGP4
<b>Peeringdb/IXPdb</b>	<a href="https://www.peeringdb.com/ix/3312">https://www.peeringdb.com/ix/3312</a>	<a href="https://www.peeringdb.com/ix/3541">https://www.peeringdb.com/ix/3541</a>
<b>Contact information</b>	Contact: sales@iptp.net More information about JumboIX: <a href="http://www.iptp.net/jumboix/">www.iptp.net/jumboix/</a> Join the JumboIX Committee: <a href="mailto:committee@jumbox.net">committee@jumbox.net</a> Join JumboIX: <a href="mailto:member@jumbox.net">member@jumbox.net</a>	



Ms. Kim Luu  
[sales@iptp.net](mailto:sales@iptp.net)

<b>IXP Name/s</b>	<b>KINX Inc.</b>
<b>Location</b>	Seoul, South Korea
<b>Point of Presence</b>	KINX Dogok / KINX Gasan (LG CNS) / KINX Bundang (Hostway) / Sangam 1 (LG CNS) / Sangam 2 (Samsung SDS) * Remote peering supported in @Tokyo (CC1), Equinix (TY2), Mega plus (HK)
<b># of connected ASNs</b>	86 ASNs
<b>Peak Traffic</b>	522Gbps
<b>Route Server</b>	YES
<b>Peeringdb/IXPdb</b>	N/A
<b>Contact Information</b>	globalbiz@kinx.net



Gloria Lee  
[sjl110@kinx.net](mailto:sjl110@kinx.net)

\*Remote peering: supported through JPIX, JPNAP, BBIX, PCCW Console Connect

# London Internet IX



IXP Name/s	London (UK) and USA	JEDIX	LINX Nairobi
<b>Location</b>	London, Manchester, Scotland, Wales, LINX NOVA	Saudi Arabia	Kenya
<b>Point of Presence</b>	<a href="http://www.linx.net/about/network/">www.linx.net/about/network/</a>	Mena gateway	IX Africa and 2x sites
<b># of connected ASNs</b>	900+	19	-
<b>Peak Traffic</b>	7.88Tb / 54.15Tb Total	319Gbps	-
<b>Route Server</b>	Yes BIRD	Yes BIRD	Yes BIRD
<b>Peeringdb/IXPdb</b>	<a href="https://www.peeringdb.com/ix/18">https://www.peeringdb.com/ix/18</a>	<a href="https://www.peeringdb.com/ix/2628">https://www.peeringdb.com/ix/2628</a>	-

Contact Person/s: Halil Kama  
 Contact information: [halil@linx.net](mailto:halil@linx.net)

# Marian Islands IX (MARIIX)

IXP Name/s	MARIIX
Location	Mangilao, Guam
Point of Presence	University of Guam, Data Center
# of connected ASNs	10
Peak Traffic	+4 Gbps
Route Server	Yes, FRR and BIRD
Peeringdb/IXPdb	<a href="https://www.peeringdb.com/ix/2301">https://www.peeringdb.com/ix/2301</a>

**MARIIX**

Jose Santiago  
jdsantiago@mariix.net  
noc@mariix.net



Karl Lacanilao  
lacanilaok@mariix.net  
abuse@mariix.net

IXP Name/s	MMIX-YGN	MMIX-MDY
<b>Location</b>	Yangon, Myanmar	Mandalay, Myanmar
<b>Point of Presence</b>	True IDC, Yangon	OceanWave DC, Mandalay
<b># of connected ASNs</b>	22	Ongoing TBA
<b>Peak Traffic</b>	110Gbps	Ongoing TBA
<b>Route Server</b>	Yes (Bird) ASN: 9654	Not yet but shall be 'Bird' ASN: 9333
<b>Peeringdb/IXPdb</b>	<a href="https://www.peeringdb.com/ix/2102">https://www.peeringdb.com/ix/2102</a>	TBA



Thein Myint Khine  
info@mm-ix.net



IXP Name/s	MYIX
Point of Presence	AIMS DC (KL) CBJ5, KVDC, CJ1, AIMS (CYBERJAYA) IPDC (JOHOR) DANAWA (KUCHING)
# of connected ASNs	135
Peak Traffic	1.9Tbps
Route Server	Yes (BIRD)
RPKI Validator	Yes
Peeringdb	<a href="https://www.peeringdb.com/ix/250">https://www.peeringdb.com/ix/250</a>



Raja Mohan  
peering@myix.my



# Internet Exchange Nepal (NPIX)



IXP Name/s	NPIX- PTS	NPIX-JWS	NPIX-DataHub
<b>Location</b>	Putalisadak, Ktm, Nepal	Jawalakhel, Patan, Nepal	Thapathali, Ktm, Nepal.
<b>Point of Presence</b>	Dataspace, Putalisadak.	Prera, Jawalakhel.	DataHub, Thapathali.
<b># of connected ASNs</b>	18	35	29
<b>Peak Traffic</b>	2.3Gbps	11.2Gbps	15Gbps
<b>Route Server</b>	Yes (BIRD)	NA	In process
<b>Peeringdb / IXpdb</b>	<a href="https://www.peeringdb.com/ix/241">https://www.peeringdb.com/ix/241</a>	<a href="https://www.peeringdb.com/ix/1658">https://www.peeringdb.com/ix/1658</a>	

\*- 29Gbps Aggregate traffic

\*\* - Setting up 2new POPs in next 6 months

#apricot2023

Rupesh Shrestha  
rupesh@npix.net.np



<b>IXP Name/s</b>	NZIX- AKL-IX
<b>AS#</b>	63830
<b>Traffic Volume</b>	400Gbps+
<b>Metric Site</b>	<a href="https://metrics.ix.nz/">https://metrics.ix.nz/</a>
<b>Peering Locations</b>	<ul style="list-style-type: none"><li>•Mayoral Drive (Spark DC)</li><li>•220 Queen St - Data Centre 220</li><li>•Vocus DC</li><li>•Datacom Orbit Drive</li><li>•Datavault</li></ul>
<b>Message</b>	NZIX runs AKL-IX, a large Auckland, NZ peering exchange. We also run smaller exchanges in Wellington and Christchurch – WLG-IX and CHC-IX
<b>Contact</b>	info@ix.nz



# PCTAIX



IXP Name/s	PCTAIX Luzon
Location	Carmona, Cavite, Philippines
Point of Presence	Total Information Management facility, Carmona, Cavite
# of connected ASNs	7
Peak Traffic	11 Gbps
Route Server	Yes
Peeringdb	<a href="https://www.peeringdb.com/ix/3379">https://www.peeringdb.com/ix/3379</a>



Michael Pablo Dela Paz  
 engineer@pcta.org.ph  
<https://pctaix.com/>

# Ryukyu IX (RIX)



<b>IXP Name/s</b>	<b>Ryukyu IX</b> <i>The RIX is an Internet Exchange Point in Okinawa, Japan. We provide reliable and low-cost interconnection between member networks in the Japan's southernmost <b>Okinawa main island</b> and beyond.</i>	
<b>Location</b>	Jitchaku Urazoe, Okinawa Japan	Makiminato Urazoe, Okinawa Japan
<b>Point of Presence</b>	NTT Com Naha Datacenter	FRT Datacenter
<b># of connected ASNs</b>	8	
<b>Peak Traffic</b>	20Gbps+	
<b>Route Server</b>	Not yet, will deploy soon.	
<b>Peeringdb / IXpdb</b>	<a href="https://www.peeringdb.com/ix/1663">https://www.peeringdb.com/ix/1663</a>	



<b>IXP Name/s</b>	<b>Singapore Internet Exchange Ltd (SGIX)</b>	
<b>Location</b>	Singapore	
<b>Point of Presence</b>	1-Net East Equinix SG1, SG2 and SG3 Global Switch Tai Seng Keppel Data Centre Singapore 1 Singtel DC West Telin-3	Digital Realty SIN10 and SIN12 Epsilon Global Hubs Singapore Racks Central STT Tai Seng 1 BDx SIN1
<b># of connected ASNs</b>	191	
<b>Peak Traffic</b>	1.8 Tbps	
<b>Route Server</b>	2 x Route Servers	
<b>Peeringdb/IXPdb</b>	<a href="https://www.peeringdb.com/asn/55518">https://www.peeringdb.com/asn/55518</a>	

## Contact &amp; Information

- Email: [info@sgix.sg](mailto:info@sgix.sg)
- Application Form: <https://www.sgix.sg/to-apply/>



Jeff Chan  
MD



Denny Ow  
Director



Phua Aik Hong  
Business Manager

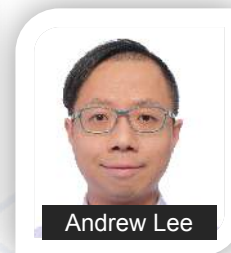
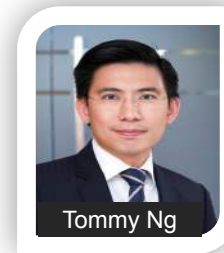


Ong Tian Huat  
Ops Manager



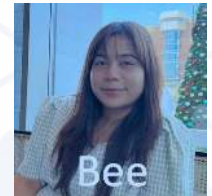
IX Name/s	iAIX (iAdvantage Internet Exchange)
Location	Hong Kong, China
Point of Presence	<b>MEGA Campus</b> <ul style="list-style-type: none"> <li>- MEGA-i</li> <li>- MEGA Plus</li> <li>- MEGA Two</li> <li>- MEGA Gateway (new DC)</li> <li>- MEGA IDC (new DC)</li> </ul>
# of connected ASNs	20+
Peak Traffic	10 Gbps+
Route Server	Yes (Both IPv4 and IPv6) (Traffic from Few Global CDN and Mainland China OTT)
Peering db/IXPdb	as9729.peeringdb.com

### Peering Advisors



- Tommy Ng ([tommyng@sunevision.com](mailto:tommyng@sunevision.com))
- Andrew Lee ([andrewlee@sunevision.com](mailto:andrewlee@sunevision.com))

IXP Name/s	THAILAND IX (Bangrak site)	THAILAND IX (Nonthaburi site)
Location	Bangkok (Thailand)	Nonthaburi (Thailand)
Point of Presence	NT Tower Datacenter	Nonthaburi Telecommunication Center Datacenter
# of connected ASNs	59	59
Peak Traffic	300-500Gbps	300-500Gbps
Route Server	Yes (Cisco Route servers)	Yes (Cisco Route servers)
RPKI	Will be displayed soon	Will be displayed soon
Peeringdb	<a href="https://www.peeringdb.com/ix/225">https://www.peeringdb.com/ix/225</a>	



Recent Updates: RPKI will be deployed by Q2 2023

Email contact: [peering@th-ix.net](mailto:peering@th-ix.net) For more information: [th-ix.net](http://th-ix.net)

<b>IXP Name/s</b>	<b>TPIX</b>
<b>Location</b>	Taipei, Taiwan
<b>Point of Presence</b>	Chief LY, Chief HD, Equinix HK1, Mega-l
<b># of connected ASNs</b>	113 -> Largest IX in Taiwan, 109 Largest IX globally
<b>Peak Traffic</b>	226Gbps
<b>Route Server</b>	Yes <Cisco ASR1001-X>
<b>Peeringdb/IXPdb</b>	<a href="https://www.peeringdb.com/ix/823">https://www.peeringdb.com/ix/823</a>



Wilson Chiu



Jeff Hong



IXP Name/s	VIX – VITRO INTERNET EXCHANGE		
<b>Location</b>	Pasig, Philippines	Makati, Philippines	Paranaque, Philippines
<b>Point of Presence</b>	Vitro Pasig DC	Vitro Makati 2 DC	Vitro Paranaque DC
<b># of connected ASNs</b>	80+		
<b>Peak Traffic</b>	500Gbps		
<b>Route Server</b>	Yes	Yes	Yes
<b>Peeringdb / IXpdb</b>	<a href="https://www.peeringdb.com/net/6927">https://www.peeringdb.com/net/6927</a>		



## Session 3 (7) Data Center

BATCH 3		
	Company Name/Facility	Speaker
1	At TOKYO	Sho Monden
2	Chief Telecom	Wilson Chiu
3	Digital Edge	Jon Sta. Ana
4	Globe Telecom	Achie Atienza
5	SUNeVision/iAdvantage	Tommy Ng
6	University of Guam	Jose Santiago
7	VITRO	J.A. Taneo

## Session 4 (5) TRANSPORT

BATCH 3		
	Company Name/Facility	Speaker
1	Chief Telecom	Wilson Chiu
2	Converge ICT	Jenina Maica Recide
3	Globe Telecom	Achie Atienza
4	Radius Telecoms	Jimmy C. Alcala
5	RISE	Gio Bacareza
6	Matrix Nap Info (Data Center / Transport)	Clara Greysla Wiryo
	Matrix Nap Info (ISP/OTT/CDN)	Saphira Anissa
	IXP	
7	AMS-IX	
8	MEGA-IX	Gavin Tweedie

Data Center	CC1/CC2	DC12 (in Dojima building #4)	QC1 (Newest foot print) (in QTNet's QD3)	HC1 (Plan to open in Q2 2023) (In S.T.E.P. Sapporo Data Center of HOTnet)
Location	Tokyo, Japan	Osaka, Japan	Hakata / Fukuoka, Japan	Sapporo / Hokkaido, Japan
IXP presence	Asia Smart IX (BBIX Asia) BBIX Tokyo JPIX Tokyo JPNAP Tokyo KINX NetIX	[On-site] BBIX Osaka JPNAP Osaka  [Available via campus connect] JPIX Osaka	BBIX Fukuoka BBIX Osaka JPNAP Fukuoka JPIX Fukuoka	Under registration
Colocators: ASN presence	77	3 (36 as Dojima building #4)	1 (9 as QD3)	Under registration
Peeringdb	<a href="https://www.peeringdb.com/fac/738">https://www.peeringdb.com/fac/738</a>	<a href="https://www.peeringdb.com/fac/8652">https://www.peeringdb.com/fac/8652</a>	<a href="https://www.peeringdb.com/fac/1351">https://www.peeringdb.com/fac/1351</a>	Under registration



Data Center	Chief LY	Chief HD	Chief LY2
Location	Taipei, Taiwan	Taipei, Taiwan	Taipei, Taiwan
IXP presence	TPIX, TWIX	TPIX, TWIX	TPIX, TWIX
Colocators: ASN presence	50+ (ongoing update)	50+ (ongoing update)	Coming Soon, 2024
Peeringdb	<a href="https://www.peeringdb.com/asn/17408">https://www.peeringdb.com/asn/17408</a>	<a href="https://www.peeringdb.com/asn/17408">https://www.peeringdb.com/asn/17408</a>	<a href="https://www.peeringdb.com/asn/17408">https://www.peeringdb.com/asn/17408</a>



Wilson Chiu



Jeff Hong



# Digital Edge

Data Center	MNL1 (Narra1)	TYO1,2,3,4,5,6, OSA1	SEL1, PUS1	JKT1 (Edge1)
Location	Manila, Philippines	Tokyo, Japan Osaka, Japan	Seoul, Korea Pusan, Korea	Jakarta, Indonesia
IXP Presence	TBD	JPIX, JPNAP, BBIX, Equinix via TYO2/Comspace1 OSA1 via Dojima	KINX via XL	JKIX via Campus IIX via Campus OpenIXP via Indonet EPIX on site
Colocators: ASN presence	Grand launch on March 1	30+	25+	11+
Peeringdb	<a href="https://www.peeringdb.com/fac/12439">https://www.peeringdb.com/fac/12439</a>	<a href="https://www.peeringdb.com/fac/599">https://www.peeringdb.com/fac/599</a>	<a href="https://www.peeringdb.com/fac/12430">https://www.peeringdb.com/fac/12430</a>	<a href="https://www.peeringdb.com/fac/11837">https://www.peeringdb.com/fac/11837</a>

Contact Person:  
**Jon Sta. Ana**  
 Sales Director  
[Jon.staana@digitaledge.com](mailto:Jon.staana@digitaledge.com)



Data Center	Globe MK2 (STT)	Globe CB1	Globe DV1 (STT)	Globe QC2(STT)
<b>Location</b>	Makati, Philippines	Cebu, Philippines	Davao, Philippines	Quezon City, Philippines
<b>IXP presence</b>	GIX, PhOpenIX, GETAFIX	GIX	GIX (soon)	GIX (soon)
<b>Colocators: ASN presence</b>	10 (ongoing update)	1 (ongoing update)	1 (ongoing update)	(ongoing update)
<b>Peeringdb</b>	<a href="https://www.peeringdb.com/fac/10852">https://www.peeringdb.com/fac/10852</a>	<a href="https://www.peeringdb.com/fac/10853">https://www.peeringdb.com/fac/10853</a>	<a href="https://www.peeringdb.com/fac/11634">https://www.peeringdb.com/fac/11634</a>	<a href="https://www.peeringdb.com/fac/11118">https://www.peeringdb.com/fac/11118</a>

**Achie Atienza**

[vbatienna@globe.com.ph](mailto:vbatienna@globe.com.ph)

[peering@globe.com.ph](mailto:peering@globe.com.ph)



# SUNeVision / iAdvantage



<b>Data Center</b>	<b>MEGA Campus</b> MEGA-i / MEGA Plus / MEGA Two MEGA Gateway, MEGA IDC (new DC)
<b>Location</b>	Hong Kong, China
<b>IXP Presence</b>	<ul style="list-style-type: none"> <li>• AMSIX-HK</li> <li>• BBIX-Asia / BBIX-HK</li> <li>• Equinix HK</li> <li>• HKIX3 / HKIX3b</li> <li>• iAIX (iAdvantage Internet Exchange)</li> <li>• KINX</li> <li>• NetIX</li> </ul>
<b>Colocators: ASN presence</b>	9729 (iAdvantage)
<b>Peeringdb</b>	as9729.peeringdb.com



Tommy Ng

tommyng@sunevision.com



Andrew Lee

andrewlee@sunevision.com



Data Center	UOG
Location	Mangilao, Guam
IXP Presence	MARIIX
Colocators: ASN presence	5 with ASN, 3 None
Peeringdb	<a href="https://www.peeringdb.com/fac/3997">https://www.peeringdb.com/fac/3997</a>

Jose Santiago

[jdsantiago@triton.uog.edu](mailto:jdsantiago@triton.uog.edu)

[uognoc@triton.uog.edu](mailto:uognoc@triton.uog.edu)



Karl Lacanilao

[lacaniolaok@triton.uog.edu](mailto:lacaniolaok@triton.uog.edu)

[iso@triton.uog.edu](mailto:iso@triton.uog.edu)





Data Center	VPS	VM2	VPQ	VSR (Soon)	VCK	VC1	VC2	VDO	VM1	VTG	VSB
Location	Pasig NCR	Makati NCR	Paranaque NCR	Sta. Rosa Laguna	Clark Pampanga	Cebu	Cebu	Davao	Makati NCR	BGC Taguig NCR	Subic
IXP	VIX, PhOpenIX, GETAFIX	VIX, GETAFIX	VIX, etc.	(soon)	TBA						
ASNs Colo	TBA										

Peering DB: <https://www.peeringdb.com/fac/4810>



City/Country	Taipei	Hong Kong	Singapore	Tokyo	Makati
<b>Facility Presence</b>	CHT, TWM, FET,GCX,etc.	CHT, etc.	CHT, etc.	CHT, GCX, etc	PLDT, Telstra, etc.
<b>Facility Type</b>	PTN	PTN	PTN	PTN	PTN
<b>Bandwidth Options</b>	10Mbps - 100Gbps	10Mbps - 100Gbps	10Mbps - 10Gbps	10Mbps - 100Gbps	10Mbps - 10Gbps
<b>Subsea Cables</b>	APG, EAC, C2C, FNAL, APCN-2,NCP	APG, EAC, C2C, FNAL,SJC, AAG, ASE	APG,SJC,APCN-2	APG, FNAL,NCP, SJC	EAC, AAG, ASE
<b>Website</b>	<a href="https://en.chief.com.tw/">https://en.chief.com.tw/</a>	<a href="https://en.chief.com.tw/">https://en.chief.com.tw/</a>	<a href="https://en.chief.com.tw/">https://en.chief.com.tw/</a>	<a href="https://en.chief.com.tw/">https://en.chief.com.tw/</a>	<a href="https://en.chief.com.tw/">https://en.chief.com.tw/</a>



Wilson Chiu



Jeff Hong



<b>City/Country</b>	Pasig City, NCR, Philippines Angeles, Pampanga, Philippines
<b>Facility Presence</b>	Globe, PLDT, TIM, IPC, DOST-ASTI, TELSTRA DCs
<b>Facility Type</b>	MPLS, DWDM / OTN, GPON
<b>Bandwidth Options</b>	2Mbps - n x 100Gbps
<b>Subsea Cables</b>	C2C, EAC, SJC, TGN-IA, AAG, SEA-US, FNAL, NCP
<b>Website</b>	<a href="https://www.convergeict.com/business/">https://www.convergeict.com/business/</a>

**Mike Basa**

**Alelei Jessette Aguas**

[michael.basa@convergeict.com](mailto:michael.basa@convergeict.com)

[alelei.aguas@convergeict.com](mailto:alelei.aguas@convergeict.com)



<b>City/Country</b>	Metro Manila, Philippines	Cebu & Davao, Philippines
<b>Facility Presence</b>	Globe, PLDT, ETPI, TIM, DOST-ASTI, DCs	Globe, PLDT DCs
<b>Facility Type</b>	DWDM, Dark Fiber(per requirement basis)	DWDM, Dark Fiber(per requirement basis)
<b>Bandwidth Options</b>	Sub 1Mbps, 1Mbps - n x 100Gbps	Sub 1Mbps, 1Mbps - n x 100Gbps
<b>Subsea Cables</b>	APCN2, C2C, EAC, SJC, TGN-IA	SEA-US (Davao)
<b>Website</b>	<a href="https://www.globe.com.ph/business.html">https://www.globe.com.ph/business.html</a>	<a href="https://www.globe.com.ph/business.html">https://www.globe.com.ph/business.html</a>

**Achie Atienza**

[vbatienza@globe.com.ph](mailto:vbatienza@globe.com.ph)

[peering@globe.com.ph](mailto:peering@globe.com.ph)



# Radius Telecom



<b>City/Country</b>	Metro Manila, Clark, Philippines	Cebu, Philippines
<b>Facility Presence</b>	Globe, VITRO, DCI, ETPI, TIM, Digital Edge, DOST-ASTI	Globe, VITRO
<b>Facility Type</b>	OTN, DWDM, GPON, CEN and Dark Fiber (per requirement basis)	OTN, DWDM, GPON, CEN and Dark Fiber (per requirement basis)
<b>Bandwidth Options</b>	1Mbps - n x 100Gbps	1Mbps - n x 100Gbps
<b>Subsea Cable</b>	C2C, EAC, AAG, ASE	N/A
<b>Website</b>	<a href="http://www.radius.ph">www.radius.ph</a>	<a href="http://www.radius.ph">www.radius.ph</a>

**Jimmy C. Alcala**  
[jcalcala@radius.ph](mailto:jcalcala@radius.ph)  
[peering@radius.ph](mailto:peering@radius.ph)



<b>City/Country</b>	Metro Manila, Philippines	Cebu City, Philippines
<b>Facility Presence</b>	Vitro (Makati 1, Makati 2, Pasig, Paranaque), TIM Carmona, Globe MK2	Vitro Cebu 1, Cyberzone, Crown 7
<b>Facility Type</b>	Carrier Ethernet, GPON, DWDM	Carrier Ethernet, GPON, DWDM
<b>Bandwidth Options</b>	10 Mbps - 100 Gbps	10 Mbps - 10 Gbps
<b>Subsea Cables</b>	ASE, C2C, EAC, SJC	N/A
<b>Website</b>	<a href="https://rise.ph/">https://rise.ph/</a>	<a href="https://rise.ph/">https://rise.ph/</a>



Mok Alfonso, Domestic  
[mok.alfonso@rise.ph](mailto:mok.alfonso@rise.ph)



Jousas Rumbutis, International  
[jousas.rumbutis@getafix.ph](mailto:jousas.rumbutis@getafix.ph)



Gio Bacareza, GetaFIX Head  
[gio.bacareza@rise.ph](mailto:gio.bacareza@rise.ph)



# Matrix NAP Info

<b>City/Country</b>	Jakarta, Indonesia	Batam, Indonesia
<b>Facility Presence</b>	MDC JK2 Cyber 1, MDC JK3 Plaza Kuningan and more than 35 Data Centers across Indonesia	MDC BM1 Nongsa, First DC Nongsa, GDS Nongsa, Graha Pena, Sumex Batam
<b>Facility Type</b>	MPLS, DWDM, Dark Fiber	MPLS, DWDM, Dark Fiber
<b>Bandwidth</b>	1G / 10G / 100G / 400G	1G / 10G / 100G / 400G
<b>Subsea Cables</b>	Primary (full system): Matrix Cable System (MCS) – running up to 6.4Tbps Secondary (capacity): B3JS, JAKBARE, Indigo West	
<b>Website / PeeringDB</b>	<a href="http://www.napinfo.co.id">www.napinfo.co.id</a>   <a href="https://www.peeringdb.com/carrier/26">https://www.peeringdb.com/carrier/26</a>	

**Rumaisha Hannan Syafura**  
sales.keyaccount@napinfo.co.id



**Clara Gresyia Wiryo**  
sales.keyaccount@napinfo.co.id



# Matrix NAP Info

Data Center	Matrix Data Center MDC BM1 Nongsa	Matrix Data Center MDC JK2 Cyber 1	Matrix Data Center MDC JK3 Plaza Kuningan
Location	Batam, Indonesia	Jakarta, Indonesia	Jakarta, Indonesia
IXP Presence	N/A	N/A	Indonesia IX (IIX) Matrix IX (MIX)
Colocators: ASN presence	TBA	More than 30	More than 20
Peeringdb	<a href="https://peeringdb.com/fac/9648">https://peeringdb.com/fac/9648</a>	<a href="https://peeringdb.com/fac/9063">https://peeringdb.com/fac/9063</a>	<a href="https://peeringdb.com/fac/1100">https://peeringdb.com/fac/1100</a>

**Rumaisha Hannan Syafura**  
sales.keyaccount@napinfo.co.id



**Clara Gresyia Wiryo**  
sales.keyaccount@napinfo.co.id



# Matrix NAP Info

<b>ASN</b>	55818	17727
<b>Traffic Profile</b>	Content	Eyeballs
<b>Traffic Volume</b>	100 – 200 Gbps	20 Gbps
<b>Peering Policy</b>	Selective	Open
<b>Peering Locations</b>	16 Locations across Asia, EU, US	13 locations across Indonesia
<b>Peeringdb Entry</b>	<a href="https://AS55818.peeringdb.com">AS55818.peeringdb.com</a>	<a href="https://AS17727.peeringdb.com">AS17727.peeringdb.com</a>
<b>Contact Information</b>	<a href="mailto:peering@napinfo.co.id">peering@napinfo.co.id</a>	<a href="mailto:peering@napinfo.co.id">peering@napinfo.co.id</a>



Saphira Anissa

# AMS-IX

IXP Name/s	AMS-IX Amsterdam	AMS-IX Hong Kong	AMS-IX Singapore
Location	Amsterdam, NL	Hong Kong, HK	Singapore
Point of Presence	16 PoPs in NL	Sino Favour	Equinix SG1
# of connected ASNs	886	61	7
Peak Traffic	11.6 Tbps	87.7 Gbps	5.02 Gbps
Route Server	Yes <BIRD>	Yes <BIRD>	Yes <BIRD>
Peeringdb/IXPdb	<a href="https://www.peeringdb.com/ix/26">https://www.peeringdb.com/ix/26</a>	<a href="https://www.peeringdb.com/ix/577">https://www.peeringdb.com/ix/577</a>	<a href="https://www.peeringdb.com/ix/3800">https://www.peeringdb.com/ix/3800</a>

Contact:

sales@ams-ix.net

#apricot2023



**APRICOT 2023**  
APNIC 55



 **Megaport (MegaIX / ECIX)**

<b>IXP Name/s</b>	<b>MegaIX / ECIX</b>
<b>Location</b>	<b>APAC: AU/NZ/SG plus DE/BG/US/CA</b>
<b>Point of Presence</b>	Too many to list – plz check peeringdb.com!
<b># of connected ASNs</b>	Varies per IX
<b>Peak Traffic</b>	1.5+Tbps
<b>Route Server</b>	Yes, BIRD
<b>Peeringdb/IXPdb</b>	<a href="https://www.peeringdb.com/org/13167">https://www.peeringdb.com/org/13167</a>

Colin Boekhout /  
Gavin Tweedie  
ix@megaport.com



# Salamat

#apricot2023

**APRICOT 2023**  
APNIC 55 